

CERTIFICATE OF LOCATION OF GOVERNMENT CORNER

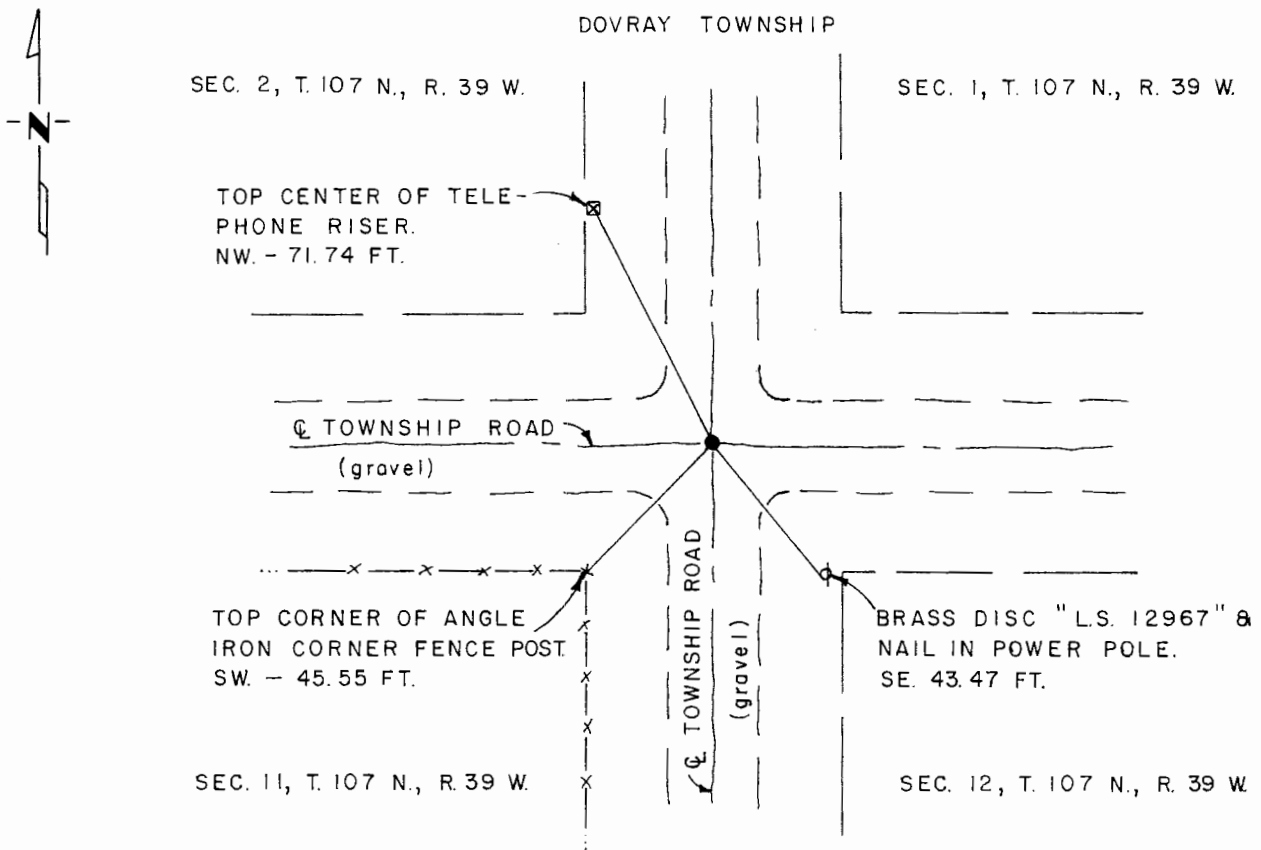
Southwest Corner of Section 1, Township 107 N., Range 39 W., 5th P.M.

STATE OF MINNESOTA, County of Murray

At the corner location shown on the sketch:

- On Aug. 9, 1980 found a 6"x8"x30" pointed field stone per Co. record with 2 lath and steel fence post beside
DATE
 - left monument as found, lowered monument, removed monument (explain)
- On AUG. 19, 1980 placed a 1/2" iron reinforcing bar with "L.S. 12967" cap over pointed field stone.
DATE

SKETCH OF REFERENCE TIES



I hereby certify that this document and the data contained herein was prepared by me or under my direct supervision.

Stanley D. Malt 12/28/81
SIGNATURE DATE

Registration No. 12967

- Land Surveyor, Professional Engineer
- County Surveyor, County Engineer

OFFICE OF THE COUNTY RECORDER

County of Murray

I hereby certify that this document was filed in the Co. Recorders office at 10 A.M. on the 18th day of February A.D., 1982

County Recorder *Willard W. Okme*

By _____, Deputy

DOCUMENT NO. _____